

**BASSO** Series models allow users to choose the most adequate subwoofer setup for any given situation from within a family of products with common finish, design solutions and performance philosophy, as well as shared rigging and transport accessories.

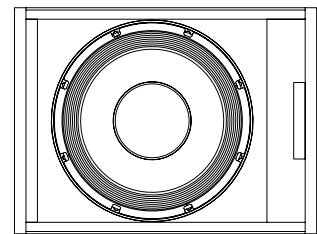
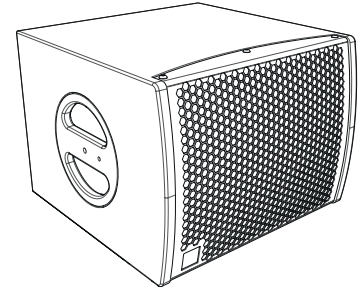
**BASSO10** is a very compact 10" subwoofer that delivers serious SPL levels for installations that require professional sound reinforcement in spaces where integration and size are key requirements.

The 10" low-frequency transducer allows this compact, powerful box to deliver high-quality audio signal with maximum electro-acoustical efficiency, power-density and outstanding maximum SPL levels.

Built with the same durable, rugged construction as all **BASSO** family members, **BASSO10** cabinet is made with 15 mm birch plywood and finished with exclusive IDEA Aquaforce textured painting. The 1.5 mm weatherized steel grilled with Aquaforce coating and an internal foam panel protect the loudspeaker from any weather or ambient conditions.

**BASSO10** features two integrated handles to easily handle this lightweight 15 kg subwoofer.

This compact form-factor cabinet measures only 395 x 295 x 400 mm allowing for unobtrusive, discreet integration into any location while providing excellent SPL for low frequency reinforcement for professional installations.

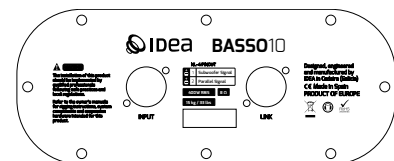


### SYSTEM CONFIGURATION AND SETTINGS

**BASSO10** back panel is fitted with a pair of Neutrik NL-4 connectors in parallel for straightforward, flexible installation setup.

#### NL-4 PINOUT:

|       |                  |
|-------|------------------|
| +/- 1 | Subwoofer Signal |
| +/- 2 | Parallel Signal  |



### RECOMMENDED SETTINGS

#### LPF@ 115 Hz

| Type        | Freq   | Q                | Gain |
|-------------|--------|------------------|------|
| Bell        | 65 Hz  | 5.6              | 2.60 |
| Bell        | 114 Hz | 6.4              | 1.60 |
| Low Pass    | 153 Hz | 0.8              | --   |
| <b>HPF:</b> | 35 Hz  | Butterworth 18dB |      |
| <b>LPF:</b> | 122 Hz | Butterworth 24dB |      |

#### LPF@ 155 Hz

| Type        | Freq   | Q                | Gain  |
|-------------|--------|------------------|-------|
| Bell        | 65 Hz  | 5.6              | 2.80  |
| Bell        | 114 Hz | 6.4              | 1.60  |
| Low Pass    | 205 Hz | 0.8              | --    |
| Bell        | 140 Hz | 9.0              | 3.50  |
| Bell        | 110 Hz | 4.0              | -1.50 |
| <b>HPF:</b> | 35 Hz  | Butterworth 18dB |       |
| <b>LPF:</b> | 156 Hz | Butterworth 24dB |       |

#### LPF@ 200 Hz

| Type        | Freq   | Q                | Gain  |
|-------------|--------|------------------|-------|
| Bell        | 65 Hz  | 5.6              | 2.80  |
| Bell        | 96 Hz  | 8.0              | -0.80 |
| Low Pass    | 245 Hz | 0.8              | --    |
| Bell        | 145 Hz | 4.0              | 1.70  |
| Bell        | 117 Hz | 6.0              | 0.30  |
| <b>HPF:</b> | 35 Hz  | Butterworth 18dB |       |
| <b>LPF:</b> | 196 Hz | Butterworth 24dB |       |

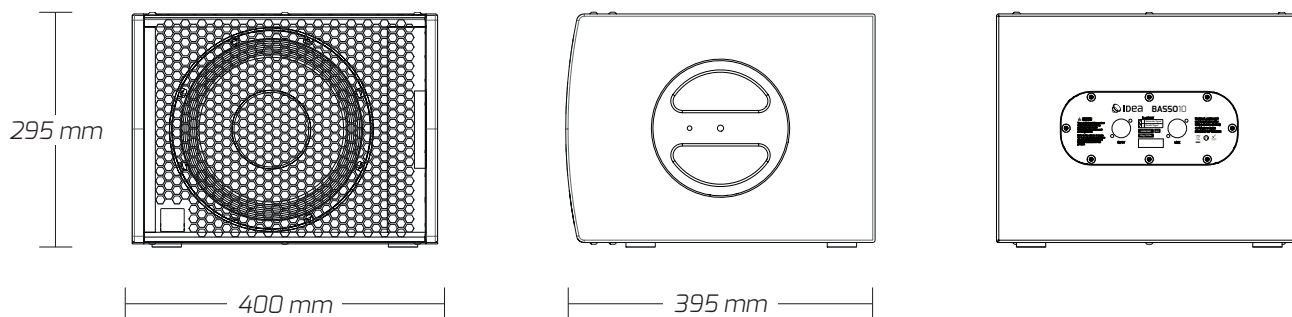
## TECHNICAL DATA

|                                 |   |
|---------------------------------|---|
| <b>Enclosure Design</b>         | Bass-Reflex   |
| <b>Transducers</b>              | 10"   |
| <b>RMS Power Handling *</b>     | 400 W   |
| <b>Nominal Impedance</b>        | 8 Ohm   |
| <b>SPL (Continuous/Peak)</b>    | 122/128 dB SPL  |
| <b>Frequency Range (-10 dB)</b> | 47 - 140/200/240 Hz   |
| <b>Frequency Range (-3 dB)</b>  | 57 - 115/155/200 Hz   |
| <b>Dimensions (WxHxD)</b>       | 395 x 300 x 400 mm<br>(15,6 x 11,8 x 15,7 inch)                           |
| <b>Weight</b>                   | 15 kg (33,1 lbs)  |
| <b>Connectors</b>               | 2 x Neutrik speakON® NL-4 in Parallel                                     |
| <b>+/-1</b>                     | Input   |
| <b>+/-2</b>                     | Link  |
| <b>Cabinet Construction</b>     | 15 mm birch plywood   |
| <b>Grille</b>                   | 1.5 mm weatherised steel with protective foam                             |
| <b>Finish</b>                   | Durable, high-resistance IDEA-proprietary Aquaforce paint coating process |
| <b>Handles</b>                  | 2 integrated handles  |
| <b>Installation</b>             | 2x M8 lateral inserts for wall-mount installation                         |
| <b>Accessories</b>              | U-Bracket (UB-B10)  |





\* IEC filtered pink noise with a 6dB crest factor, 2 hours.

\*\* Frequency range values for recommended factory presets.

## TECHNICAL DRAWINGS



## WARNINGS AND SAFETY GUIDELINES

- Read this document thoroughly, follow all safety warnings and keep it for future reference.
-  · The exclamation mark inside a triangle indicates that whatever repairing and component replacement operations must be done by qualified and authorized personnel.
- No user serviceable parts inside.
- Only use accessories tested and approved by IDEA and supplied by the manufacturer or an authorized dealer.
- Installations, rigging and suspension operations must be done by qualified personnel.
- Only use accessories specified by IDEA, complying with maximum loads specifications and following local safety regulations.
-  · Read the specifications and connection instructions before proceeding to connect the system and use only cabling supplied or recommended by IDEA. Connection of the system should be done by qualified personnel.
- Professional sound reinforcement systems can deliver high SPL levels that may result in hearing damage. Do not stand close to the system while in use.
-  · Loudspeakers produce magnetic field even while they are not in use or even when disconnected. Do not place or expose loudspeakers to any device that is sensitive to magnetic fields such as television monitors or data storage magnetic material.
- Disconnect the equipment during lightning storms and when it is not to be used for a long time.
- Do not expose this device to rain or moisture.
- Do not place any objects containing liquids, such as bottles or glasses, on the top of the unit. Do not splash liquids on the unit.
- Clean with a wet cloth. Do not use solvent-based cleaners.
- Regularly check the loudspeaker housings and accessories for visible signs of wear and tear, and replace them when necessary.
- Refer all servicing to qualified service personnel.
-  · This symbol on the product indicates that this product should not be treated as household waste. Follow local regulation for recycling of electronic devices.
- IDEA declines any responsibility from misuse that may result in malfunction or damage of the equipment.

## WARRANTY

- All IDEA products are guaranteed against any manufacturing defect for a period of 5 years from date of purchase for acoustical parts and 2 years from date of purchase for electronic devices.
- The guarantee excludes damage from incorrect use of the product.
- Any guarantee repair, replacement and servicing must be exclusively done by the factory or any of authorized service centres.
- Do not open or intend to repair the product; otherwise servicing and replacement will not be applicable for guarantee repair.
- Return the damaged unit, at shipper's risk and freight prepaid, to the nearest service centre with a copy of the purchase invoice in order to claim guarantee service or replacement.

## DECLARATION OF CONFORMITY

### I MAS D Electroacústica SL

Constitución 5 – 9, 46009 VALENCIA (Spain)

Declares that: **BASSO10**

Complies with the following EU Directives:

- RoHS (2002/95/CE) Restriction of Hazardous Substances
- LVD (2006/95/CE) Low Voltage Directive
- EMC (2004/108/CE) Electro-Magnetic Compatibility
- WEEE (2002/96/CE) Waste of Electric and Electronic Equipment
- EN 60065: 2002 Audio, video and similar electronic apparatus. Safety requirements.
- EN 55103-1: 1996 Electromagnetic compatibility; Emission
- EN 55103-2: 1996 Electromagnetic compatibility; Immunity



[www.ideaproaudio.com](http://www.ideaproaudio.com)



For further information scan the QR Code  
or refer to the following web address: [www.ideaproaudio.com/basso10](http://www.ideaproaudio.com/basso10)

IDEA is always in pursuit of better performance, greater reliability and design features.  
Technical specifications and minor finish details may vary without notice in order to improve our products.

©2017 - I MAS D Electroacústica SL  
Av. Constitución 5-9 46009 VALENCIA